

## Manual for upper computer use

### 1. Tools for software upgrading

- 1.1. A laptop or desktop computer installing a RS485 to USB driver, BootLoader software and UIWare software.
- 1.2. A RS485/USB converter with relative cables which have been modified according to the interface definition of Power Lite.

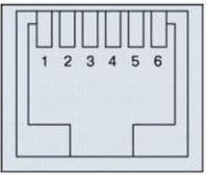
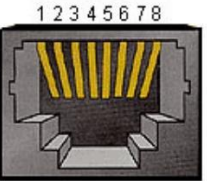
Interface	Pin Definiton	Pic.
RS232	Pin 3: BMS transmit; Computer receiver Pin 4: BMS receiver; Computer transmit Pin 5: GND Pin 1、2 6: NC	
RS485	Pin 4: NC Pin 2、7: RS485-A Pin 3、6: RS485-B Pin 8: GND	

Figure 1.1 Interface definition of Power Lite

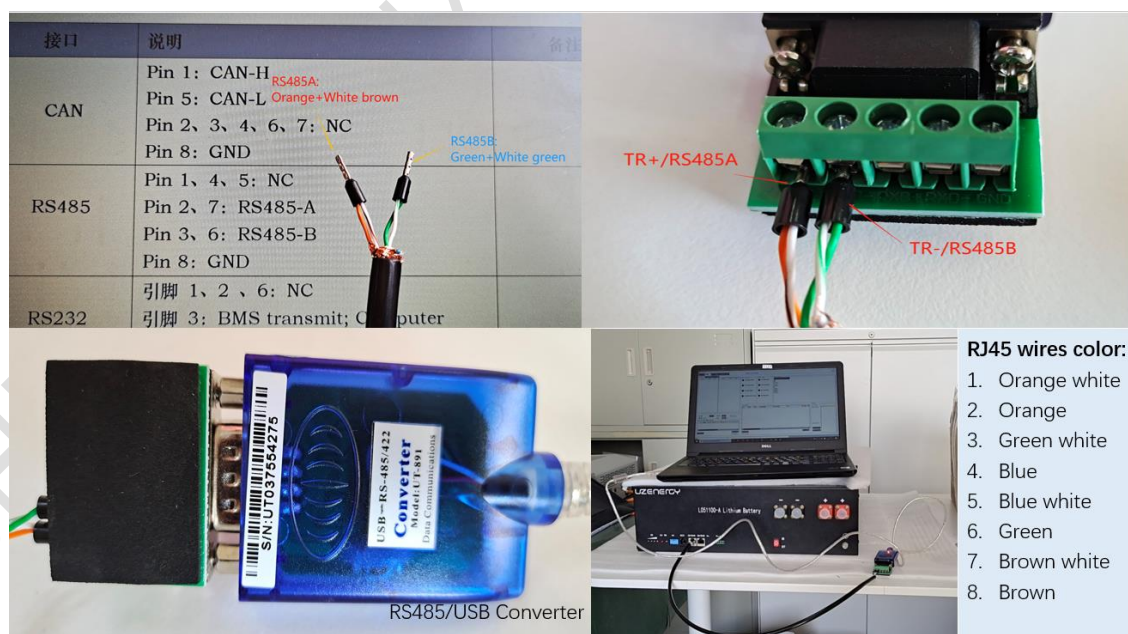


Figure 1.2 RS485/USB converter for upper computer use

## 2. Check the version of BMS program

- 2.1. Open upper computer software “UIWare”, if the language is not English, please set it by typing “English” at the bottom right of upper computer interface.

名称	修改日期	类型	大小
config	2020-05-28 17:30	文件夹	
DataBase	2020-05-28 17:30	文件夹	
file_analysisistpath	2020-03-12 12:01	Microsoft Word ...	3 KB
Microsoft.Office.Interop.Excel.dll	2011-12-12 6:54	应用程序扩展	1,514 KB
<b>UIWare</b>	2020-05-28 14:11	应用程序	379 KB
UIWare.pdb	2020-05-28 14:11	PDB 文件	430 KB
UIWare	2020-05-28 14:11	XML 文档	16 KB

Figure 2.1 Open software “UIWare”



Figure 2.1 Language setting

- 2.2. Select “INFO” button, and set the number of “DipAddr” to “0” as below.

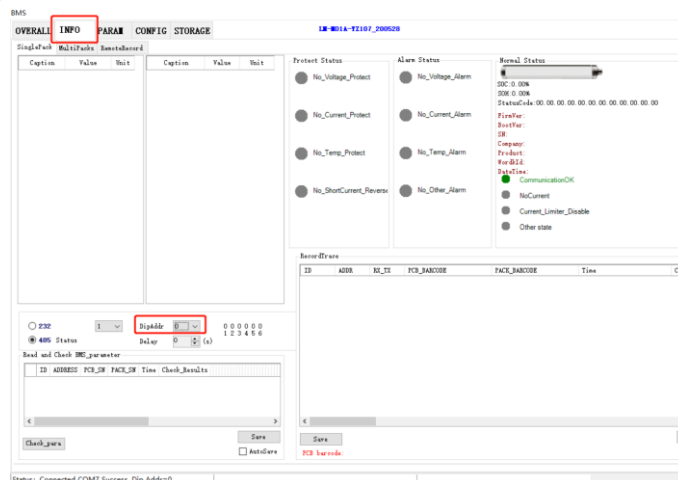
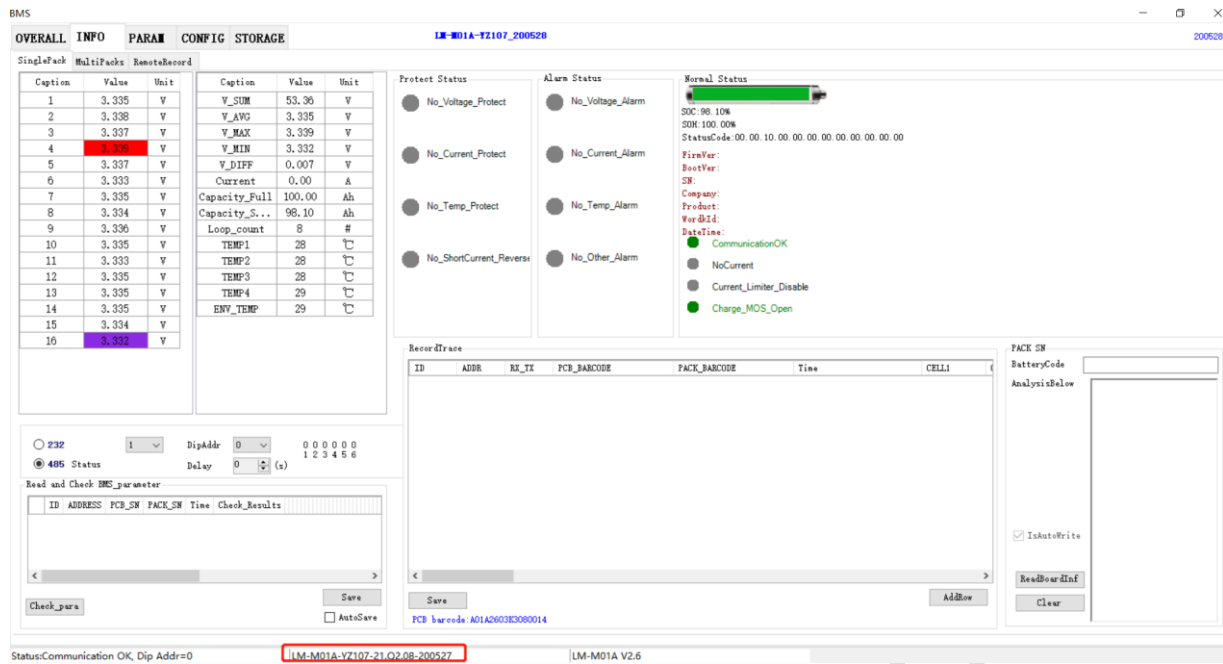


Figure 2.2 Set dial-up address

- 2.3. When communication is OK, battery information can be read from the interface.



### Figure 2.3 Battery information

**—END**